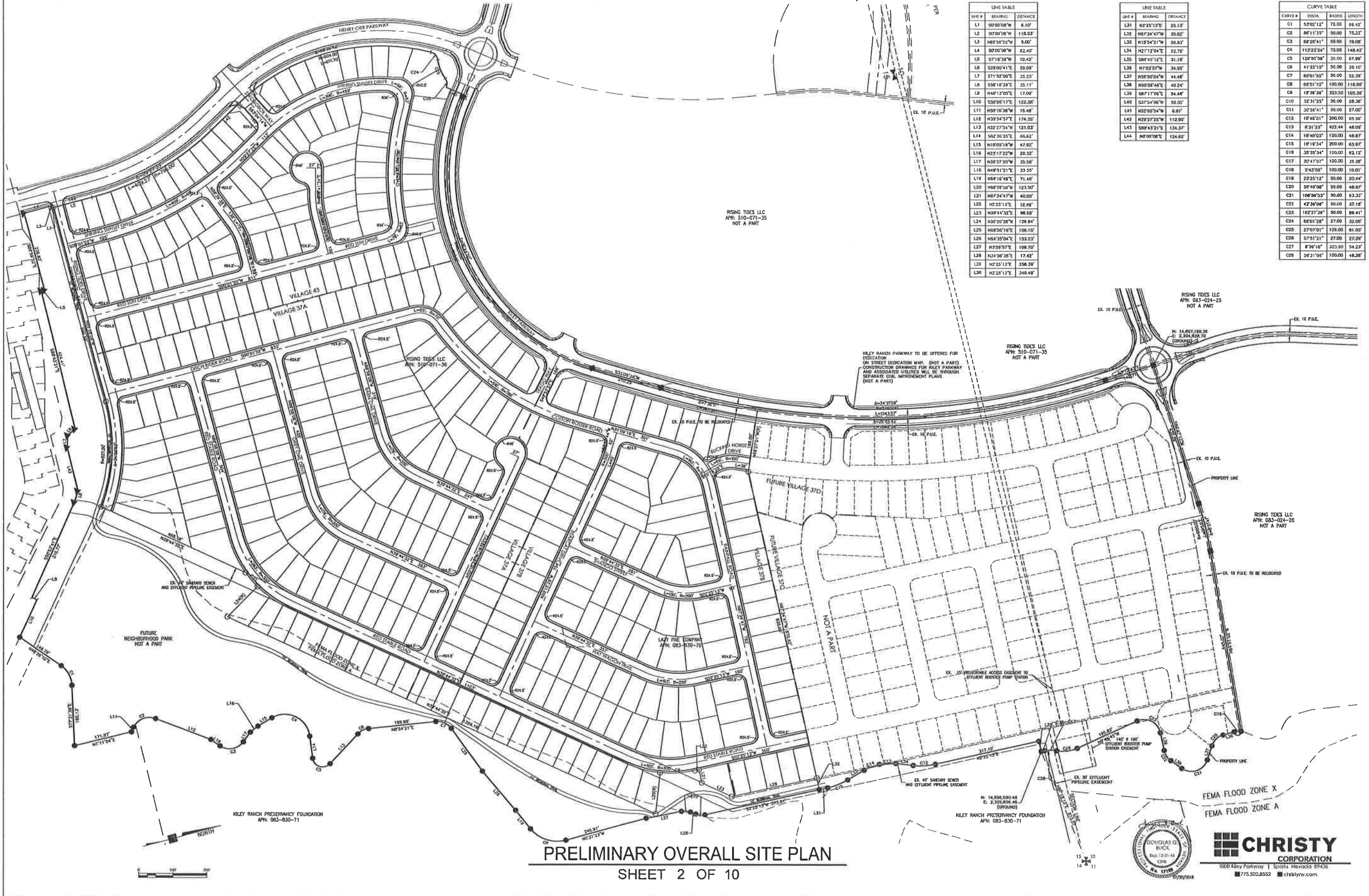


TENTATIVE MAP FOR KILEY RANCH NORTH PHASE 6~ VILLAGES 37A, 37B & 43 LEWIS INVESTMENT COMPANY OF NEVADA, LLC.



LINE #	BEARING	DISTANCE
L1	S00°00'00"W	8.10'
L2	S07°00'00"W	118.53'
L3	N87°56'52"W	8.00'
L4	S07°00'00"W	82.40'
L5	S71°18'38"W	10.43'
L6	S28°00'41"E	29.09'
L7	S71°32'00"E	35.25'
L8	S58°18'29"E	35.11'
L9	N44°12'00"E	17.00'
L10	S50°06'17"E	122.28'
L11	N05°18'38"W	15.48'
L12	N33°54'57"E	174.35'
L13	N32°27'54"W	121.03'
L14	S62°36'55"E	66.62'
L15	N18°00'19"W	47.82'
L16	N23°17'22"W	29.32'
L17	N38°37'30"W	35.56'
L18	N44°51'21"E	33.35'
L19	N44°18'48"E	71.46'
L20	N48°59'08"W	123.90'
L21	N87°34'47"W	40.80'
L22	N22°13'12"E	12.48'
L23	N38°44'32"E	88.98'
L24	N30°20'28"W	128.94'
L25	N48°56'16"E	158.13'
L26	N54°35'04"E	153.23'
L27	N33°09'37"E	108.70'
L28	N34°36'36"E	17.42'
L29	N25°13'13"E	258.39'
L30	N25°13'13"E	248.49'

LINE #	BEARING	DISTANCE
L31	N25°13'13"E	22.13'
L32	N87°34'47"W	35.82'
L33	N15°54'21"W	56.83'
L34	N21°12'04"E	52.76'
L35	S88°45'12"E	31.18'
L36	N103°30'37"W	34.95'
L37	N38°30'04"W	44.48'
L38	N30°06'48"E	40.24'
L39	S87°17'05"E	54.48'
L40	S37°54'08"W	56.00'
L41	N32°05'54"W	6.87'
L42	N28°27'25"W	112.90'
L43	S88°43'21"E	134.37'
L44	N0°00'00"E	134.62'

CURVE #	DATA	RADIUS	LENGTH
C1	S3°02'12"	79.00	69.42'
C2	S6°11'32"	30.00	75.23'
C3	N7°28'41"	50.00	78.08'
C4	N13°23'34"	79.00	148.43'
C5	N2°50'38"	30.00	67.99'
C6	N7°22'15"	50.00	39.10'
C7	S0°51'55"	50.00	32.33'
C8	S6°51'13"	100.00	116.68'
C9	S1°39'39"	323.50	103.38'
C10	S2°31'23"	50.00	28.38'
C11	S2°56'41"	50.00	27.00'
C12	S1°48'51"	200.00	63.56'
C13	S7°31'28"	422.44	48.09'
C14	S1°40'03"	150.00	48.87'
C15	S1°19'34"	200.00	63.67'
C16	S3°35'34"	100.00	62.12'
C17	S2°47'07"	100.00	36.28'
C18	S4°33'39"	100.00	100.01'
C19	S2°25'13"	50.00	30.44'
C20	S5°48'08"	50.00	48.87'
C21	N06°56'53"	50.00	63.33'
C22	N2°36'08"	50.00	37.18'
C23	N22°27'28"	50.00	69.41'
C24	S6°01'28"	27.00	32.98'
C25	S7°07'01"	129.00	61.92'
C26	S7°21'21"	27.00	27.98'
C27	S7°36'18"	323.50	54.23'
C28	S2°31'06"	100.00	46.28'

PRELIMINARY OVERALL SITE PLAN
SHEET 2 OF 10

